

PHILIPPINE

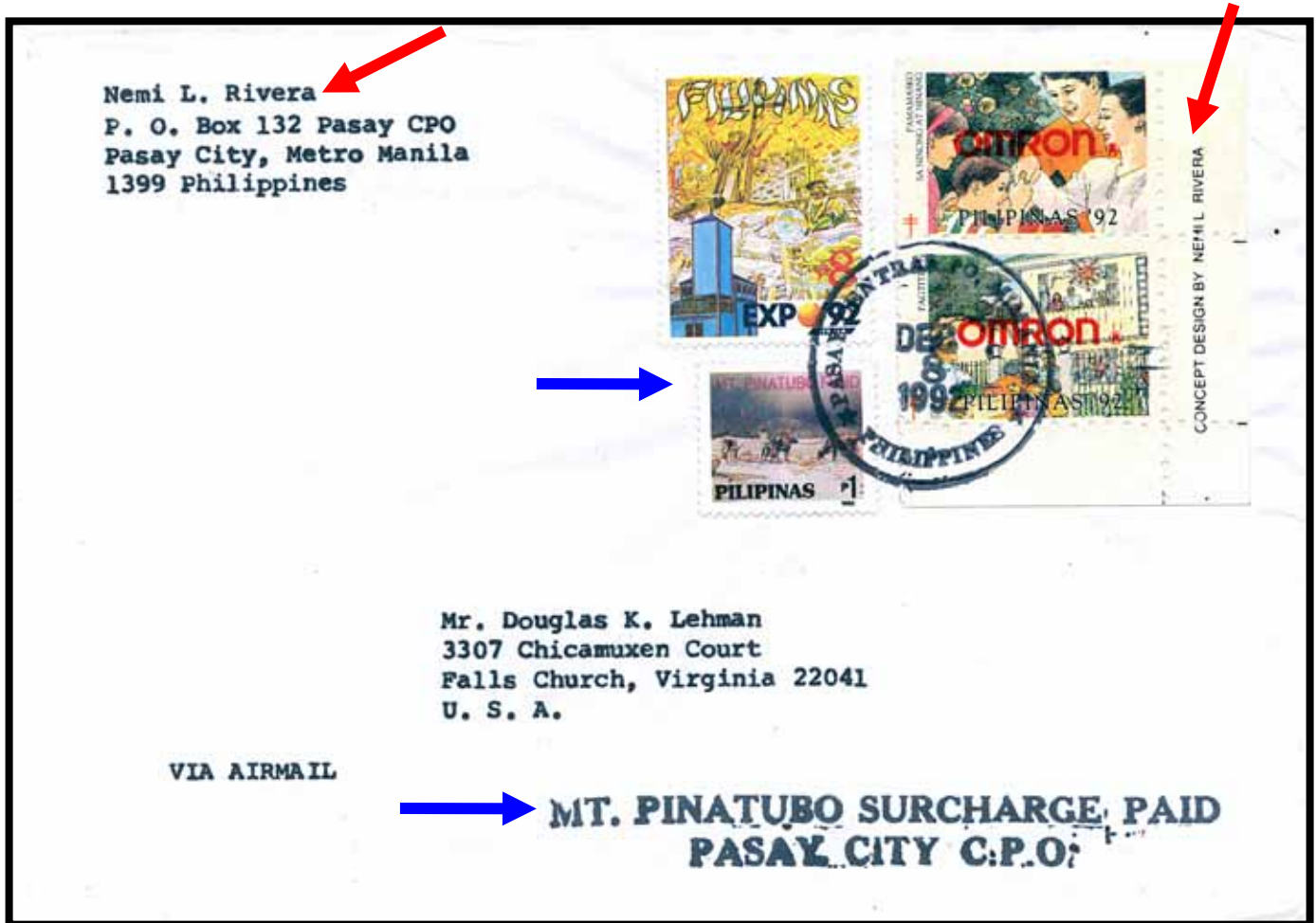


ISLANDS

Mount Pinatubo Compulsory Surcharge Stamps



The Philippines issued five surcharge stamps for the victims of the Mount Pinatubo volcano disaster – one 25c (inland mail) and four 1 peso (foreign mail) values. Required on all **air mail** letters between November 16, 1992 and February 28, 1993 in addition to the necessary postage.



On this December 8, 1992 air mail letter, the sender and the concept designer of the tied Christmas seal (Philippine Tuberculosis Society) are the same Nemi Rivera. The red **OMRON** overprint on the Christmas seal was sponsored by that computer automation corporation.

PHILIPPINE



ISLANDS

Specimens

A Philippine Philatelic Tradition

Manila



Officials overprinted stamps as specimens for government archives, to provide examples to the UPU, and philatelic favors. These have limited quantities and printings span over a century of continuance.



Spanish Era. These occur in several types and colors marked either MUESTRA or MINISTERIO DE ULTRAMAR MUESTRAS



US Administration Era. 1926 as issued perforated examples plus red overprints of SPECIMEN (top) and CANCELLED (bottom)



Republic Era. 1984 Christmas issue, less than 500 printed.

US Administration Era. 1926 imperforate examples using trial colors plus red CANCELLED overprint

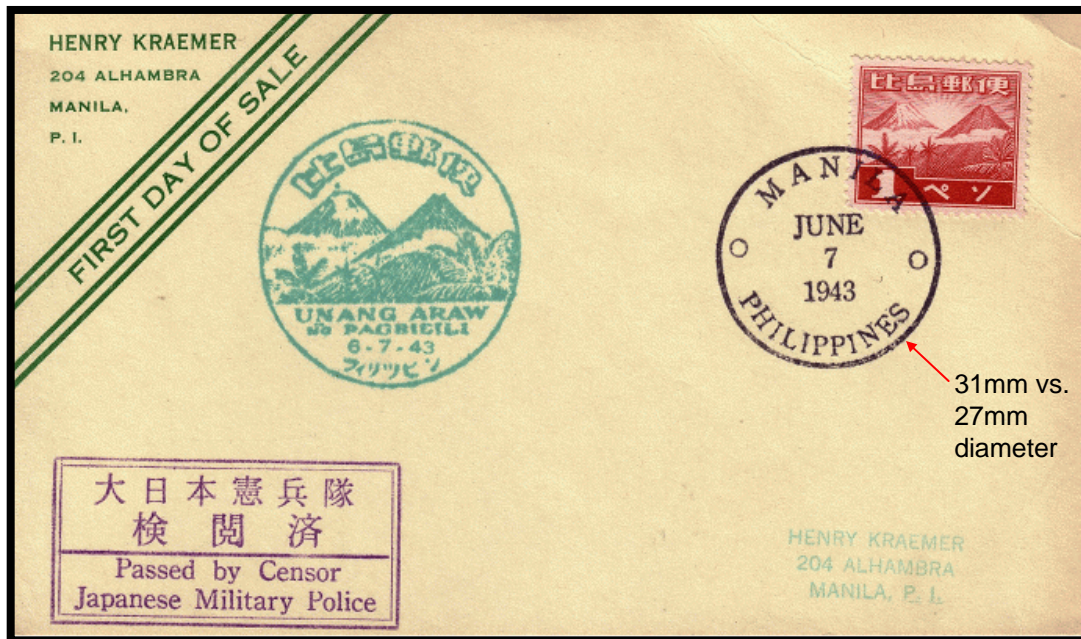


Forgeries

Fake Stamps, Overprints, and Markings

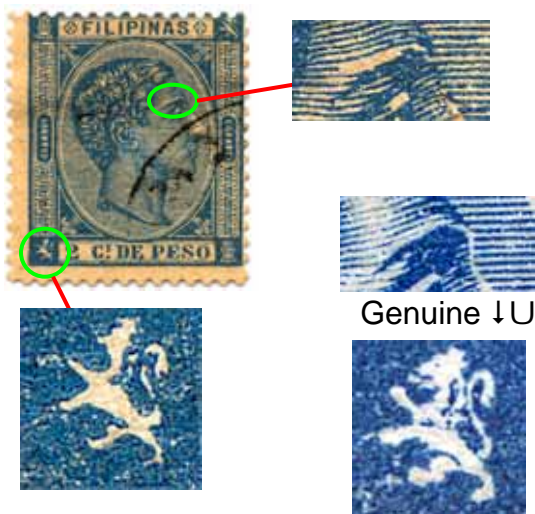


Individuals prepared forgeries to simulate ordinary stamps for postal purposes and to imitate high-value stamps to fool collectors. Fakes exist in all eras produced both within and outside the islands.



31mm vs. 27mm diameter

Kraemer Fake. Genuine stamp with fake cancel, censor mark, and cachet rubber stamps. Made in California in the mid-1970s and found mostly in the US. The green cachet was not used on this date but the KRAEMER corner/addressee easily identify most of these fakes.



Genuine ↓ U

Forged Spanish era 1875 2c stamp by Spaniard Segui (these are normally unused) showing differences (eyebrow and lion) to genuine.



Fake **VICTORY** (30mm)

Genuine **VICTORY** (29mm)



Genuine 1938 (top) and 1945 (bottom) overprinted COMMONWEALTH stamps. The forged **VICTORY** overprint (incorrect bottom position) was sold only at the Cebu Post Office.



Revenue Stamps

Spanish Era to the Republic



1869 16-Escudos
Documentary Stamped
Paper "Validated for the
Republic"



1899 Draft stamps,
left has range error in
top tablet, crudely
drawn on stone plates



January 23, 1899 document piece with 25c
Customs fee with rare BISECT validated by
Army Lt. **C.S. Haughwout's** initials.



May 15, 1945 Liberation Era. Internal Revenue stamps marked VICTORY *without* Serial Numbers.
Rare use in Leyte Province paying annual business license for a sari sari shop (variety store). NOTE:
many Philippine revenue documents contain only half stamps, taxpayer half and government half.



March 28, 1925 5 Peso
penalty tax of late renewal
of a Driver's License



1907-11 2c Documentary
printed on bank check,
basic tax per check



1953 TRIPLE-DOUBLE. (1) pre-WWII to
Liberation, (2) US Admin to Republic, and (3)
Internal Revenue to Documentary.